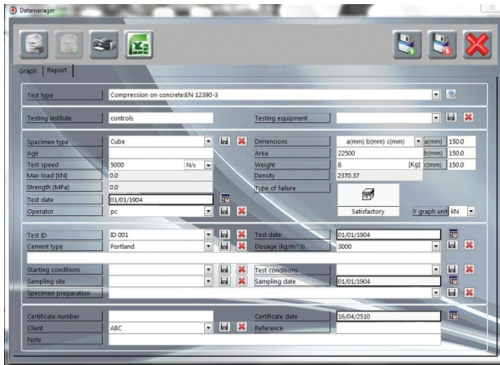


## DATA SHEET

### Data Manager PC Software



82-SW/DM Test settings

### General description

The 82-SW/DM is new intuitive and smart DATAMANAGER software, very easy to use, complete with many functions, totally flexible and open to network communications. It's compatible with PILOT PRO and AUTOMAX PRO PCS and included in more sophisticated systems as AUTOMAX Multitest console.

It allows real time acquisition and management of all test data and remote control of the machine.

This software provides the data acquisition in real time throughout the test execution up to the specimen failure. All readings are displayed both as graphical and numerical format and stress vs. time plot is traced out in real time. The advanced functions for data base management provide an easy navigation of all saved data.

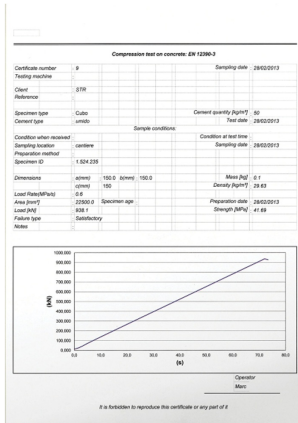
The produced test certificate is customizable and includes all descriptive information, test results and stress vs. time diagram. The conformity to standards of test execution is therefore proved.

### Standards

- ASTM C39
- ASTM C109
- EN 12390-5
- ASTM C293
- ASTM C78
- EN 12390-6
- EN 1338
- ASTM C496
- EN 1339
- EN 1340
- EN 196-1
- EN 12390-3
- ASTM C348



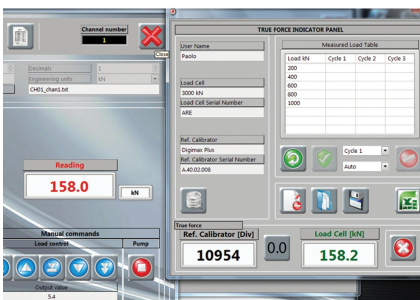
## DATA SHEET



DATAMANAGER Software Example of single test report

Time last saved	Channel no.	Test name	Qty	Equip.	Sample type	Dimension type	Dim 1	Dim 2	Dim 3
28.02.2013 10:27:00	1	Compression test on concrete EN 12390-3	Cylinder	2	135	270	180	0	0
28.02.2013 10:48:13	1	Compression test on concrete EN 12390-3	Cylinder	1	150	300	180	0	0
28.02.2013 10:48:13	1	Compression test on concrete EN 12390-3	Cylinder	1	150	300	180	0	0
28.02.2013 10:55:38	1	Compression test on concrete EN 12390-3	Cylinder	1	160	280	180	0	0
28.02.2013 11:28:50	1	Compression test on concrete EN 12390-3	Cube	0	120	120	120	0	0
28.02.2013 11:48:22	1	Compression test on concrete EN 12390-3	Cube	0	120	120	120	0	0
28.02.2013 11:48:54	1	Compression test on concrete EN 12390-3	Cube	0	120	120	120	0	0
28.02.2013 11:52:56	1	Compression test on concrete EN 12390-3	Cube	0	130	130	130	0	0
28.02.2013 12:04:00	1	Compression test on concrete EN 12390-3	Cube	0	130	130	130	0	0
28.02.2013 12:07:17	1	Compression test on concrete EN 12390-3	Cube	0	130	130	130	0	0
28.02.2013 12:08:51	1	Compression test on concrete EN 12390-3	Cube	0	135	135	135	0	0
28.02.2013 12:11:38	1	Compression test on concrete EN 12390-3	Cube	0	135	135	135	0	0
28.02.2013 12:14:04	1	Compression test on concrete EN 12390-3	Cube	0	145	145	145	0	0
28.02.2013 12:15:44	1	Compression test on concrete EN 12390-3	Cube	0	145	145	145	0	0
28.02.2013 12:17:01	1	Compression test on concrete EN 12390-3	Cube	0	145	145	145	0	0
28.02.2013 12:19:03	1	Compression test on concrete EN 12390-3	Cube	0	170	170	170	0	0
28.02.2013 12:21:58	1	Compression test on concrete EN 12390-3	Cube	0	170	170	170	0	0
28.02.2013 12:23:10	1	Compression test on concrete EN 12390-3	Cube	0	170	170	170	0	0
28.02.2013 12:25:10	1	Compression test on concrete EN 12390-3	Cube	0	170	170	170	0	0
28.02.2013 13:54:38	1	Compression test on concrete EN 12390-3	Cube	0	180	180	180	0	0
28.02.2013 13:58:48	1	Compression test on concrete EN 12390-3	Cube	0	180	180	180	0	0

DATAMANAGER Archive



DATAMANAGER Calibration menu

## Products

50-SW/DM

DATAMANAGER PC software compatible with DIGIMAX, PILOT, AUTOMAX, PILOT PRO, AUTOMAX PRO and PRO-M. Suitable for remote control of the system (except DIGIMAX), data acquisition, processing and filing. LAN cable included.